

## 225 SOLAR PANEL

EXCEPTIONAL EFFICIENCY AND PERFORMANCE

### BENEFITS

#### Highest Efficiency

Panel efficiency of 18.1% is higher than any commercially available panel of similar size

#### More Power

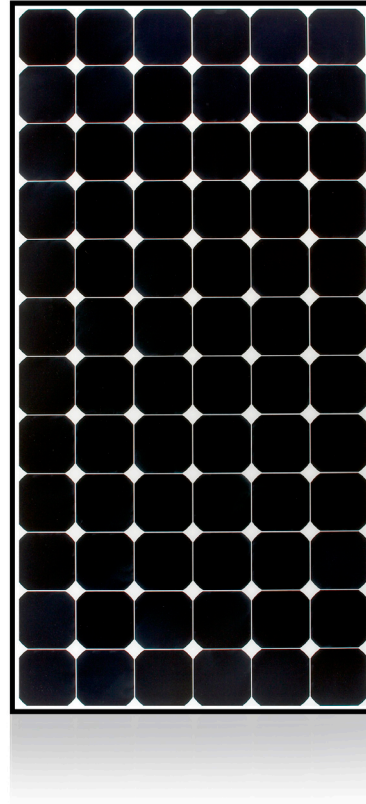
Delivers up to 50% more power per unit area than conventional solar panels and 100% more than thin film solar panels

#### Reduces Installation Cost

More power per panel means fewer panels per install. This saves both time and money

#### Reliable and Robust Design

Proven materials, tempered front glass, and a sturdy anodized frame allow panel to operate reliably in multiple mounting configurations



The SunPower 225 Solar Panel provides today's highest efficiency and performance. Utilizing 72 next generation SunPower all-back contact solar cells and an optimized panel design, the SunPower 225 delivers an unprecedented total panel conversion efficiency of 18.1%. The 225 panel's reduced voltage-temperature coefficient and exceptional low-light performance attributes provide far higher energy delivery per peak power than conventional panels.

### SunPower's High Efficiency Advantage - Up to Twice the Power

Comparable systems covering 1000 m<sup>2</sup> / 10,750 ft<sup>2</sup>

	Thin Film	Conventional	SunPower
Watts / Panel	65	165	225
Efficiency	9.0%	12.0%	18.1%
kWs	90	120	181

### Electrical Data

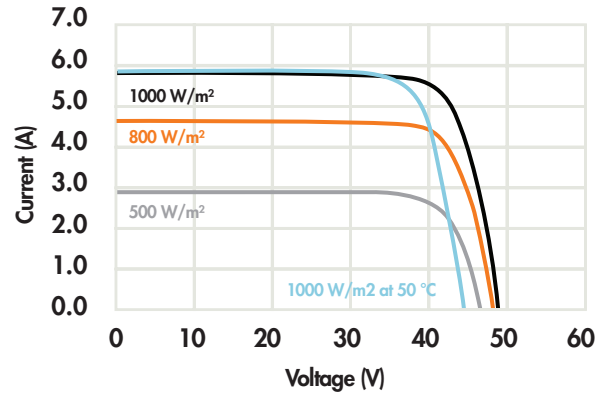
Measured at Standard Test Conditions (STC): irradiance of 1000/m<sup>2</sup>, air mass 1.5g, and cell temperature 25 C

Peak Power (+/-5%)	Pmax	225 W
Rated Voltage	Vmp	41.0 V
Rated Current	Imp	5.49 A
Open Circuit Voltage	Voc	48.5 V
Short Circuit Current	Isc	5.87 A
Maximum System Voltage	IEC, UL	1000 V, 600 V
Temperature Coefficients		
	Power	-0.38% /°C
	Voltage (Voc)	-132.5m V/°C
	Current (Isc)	3.5m A/°C
Series Fuse Rating		15 A
Peak Power per Unit Area		181 W/m <sup>2</sup> , 16.8 W/ft <sup>2</sup>
CEC PTC Rating		209.2 W

### Mechanical Data

Solar Cells	72 SunPower all-back contact monocrystalline
Front Glass	3.2mm (1/8 in.)tempered
Junction Box	IP-65 rated with 3 bypass diodes
Output Cables	900mm length cable / MultiContact connectors
Frame	Anodized aluminum alloy type 6063
Weight	15kg, 33lbs

### IV Curve



Current/voltage characteristics with dependence on irradiance and module-temperature.

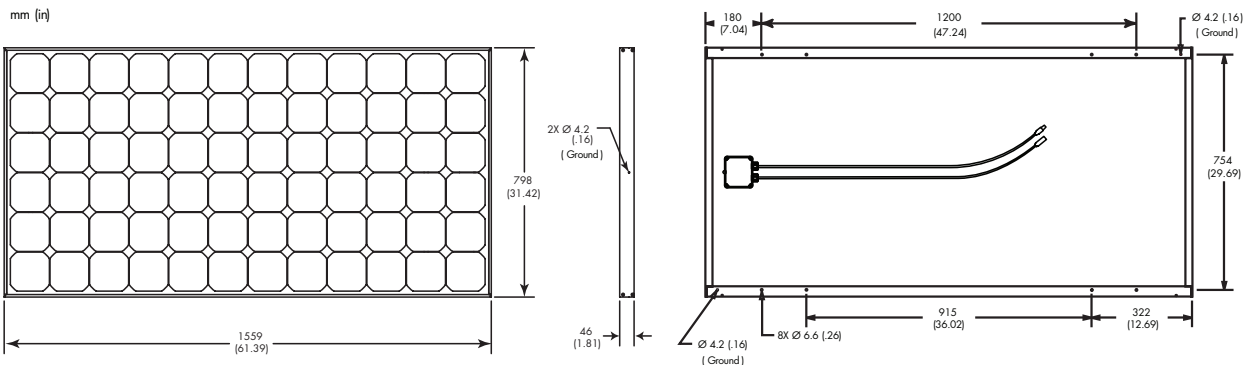
### Tested Operating Conditions

Temperature	-40°C to +90°C (-40°F to +194°F)
Max load	50psf (2400 pascals) front and back
Impact Resistance	Hail - 25mm (1 in.) at 23 m/s (52mph)

### Warranty and Certifications

Warranty	25 year limited power warranty 10 year limited product warranty
Certifications	IEC 61215 , Safety tested IEC 61730; UL listed (UL 1703), Class C Fire Rating

### Dimensions



**CAUTION: READ SAFETY AND INSTALLATION INSTRUCTIONS BEFORE USING THE PRODUCT.** Go to [www.sunpowercorp.com/panels](http://www.sunpowercorp.com/panels) for details.

### About SunPower

SunPower designs, manufactures and delivers high-performance solar electric technology worldwide. Our high-efficiency solar cells generate up to 50 percent more power than conventional solar cells. Our high-performance solar panels, roof tiles and trackers deliver significantly more energy than competing systems.